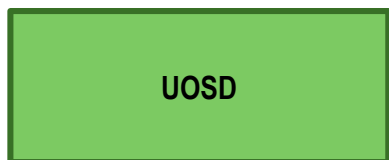
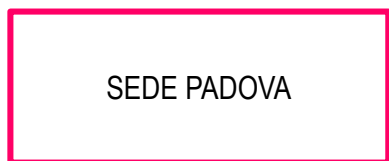
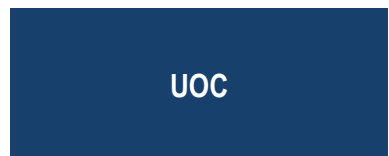


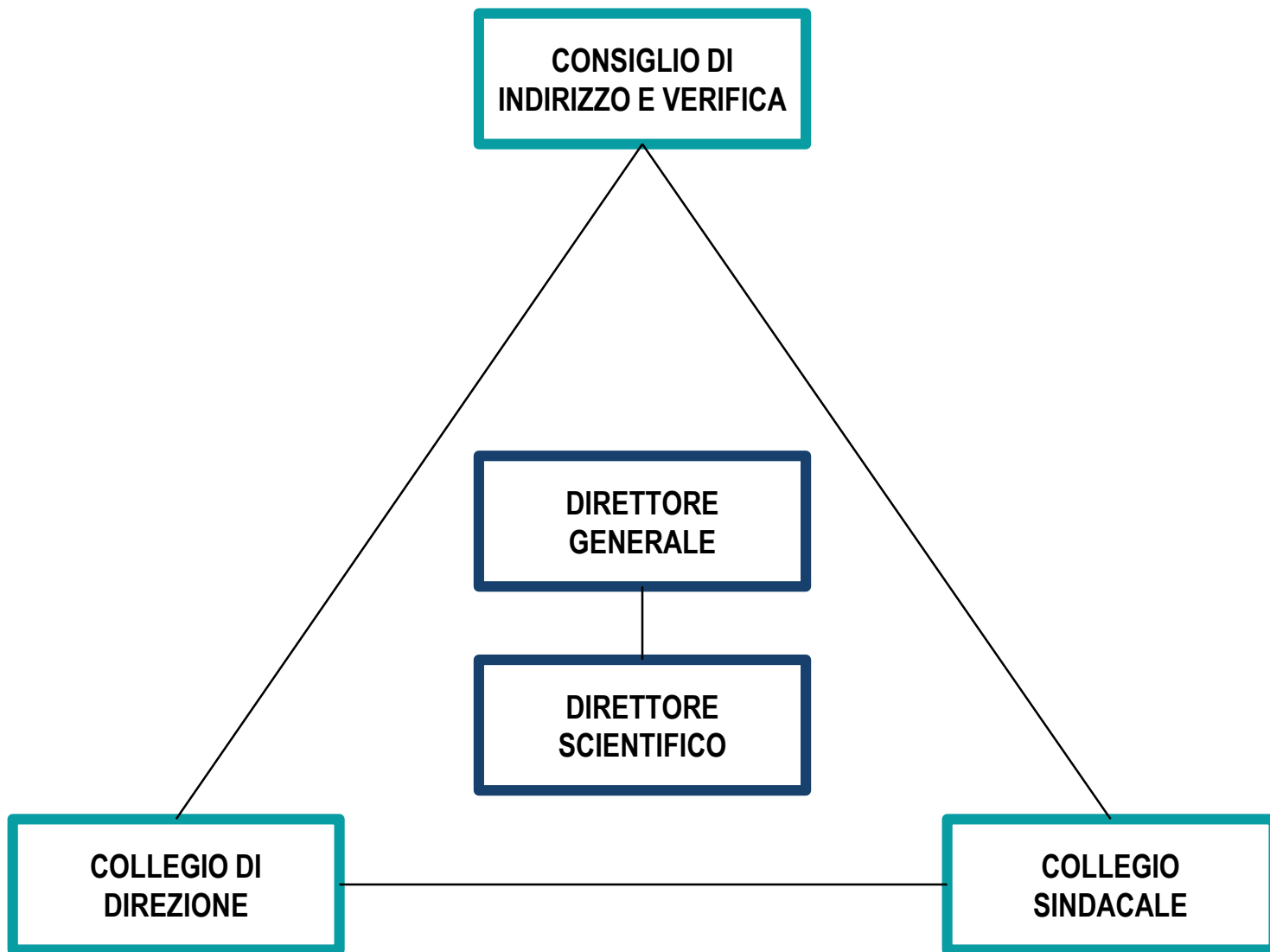
Allegato 1: Organigramma dell'Istituto

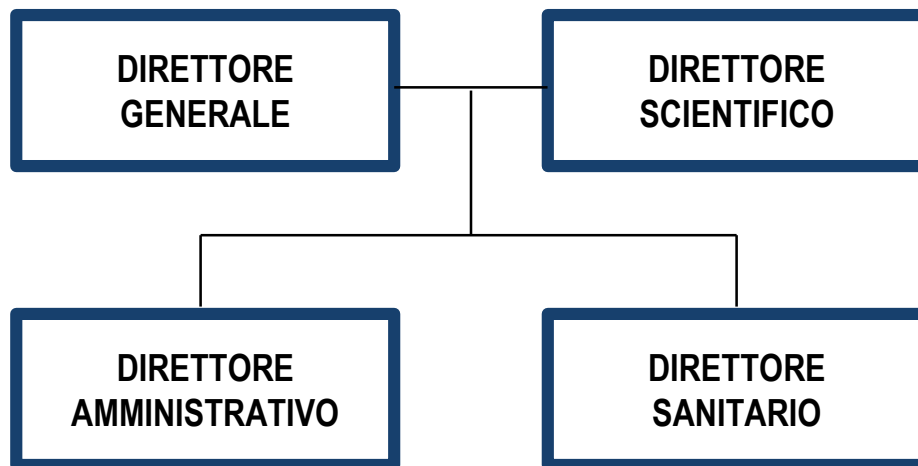
Legenda



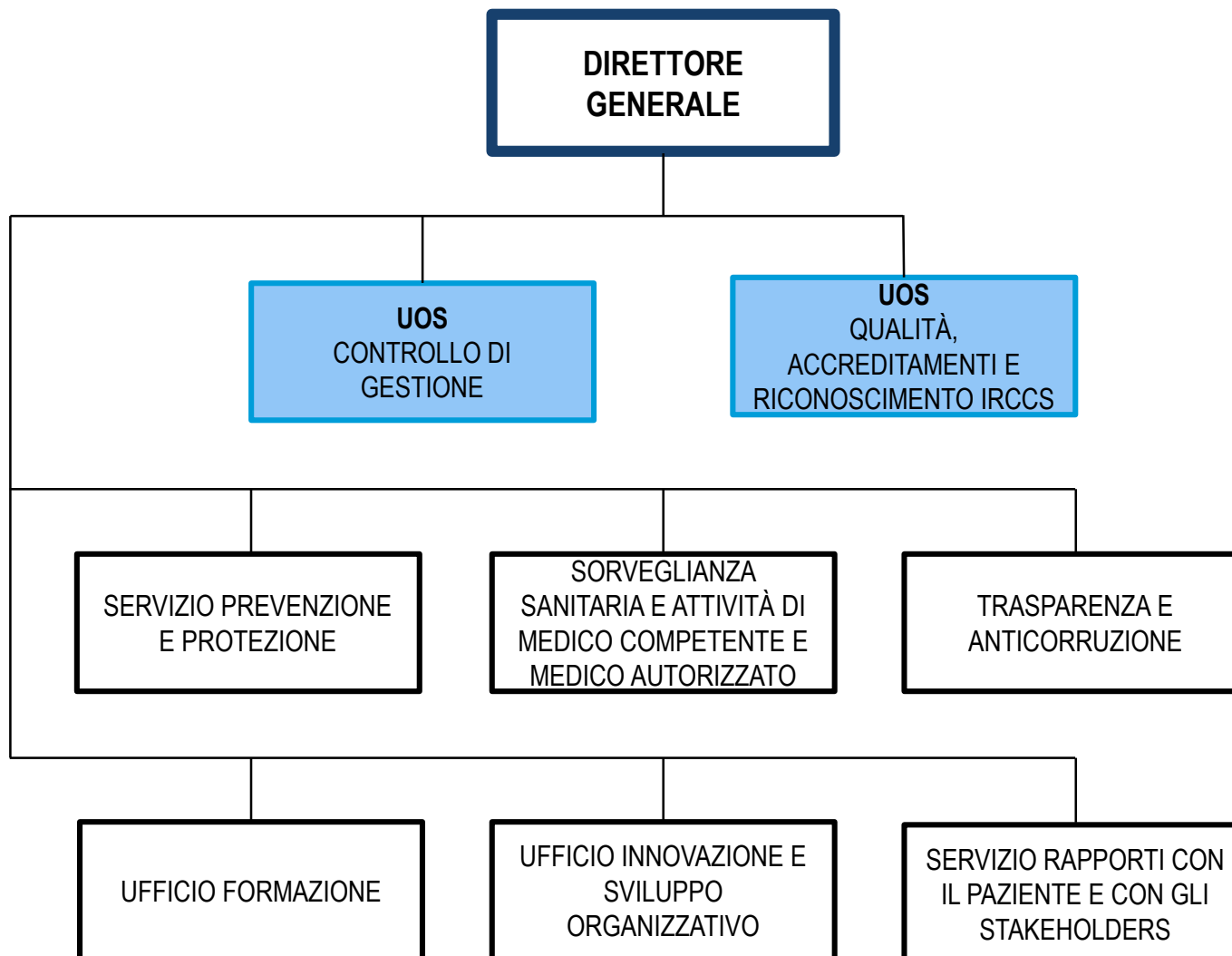
dipendenza gerarchica

rapporto funzionale

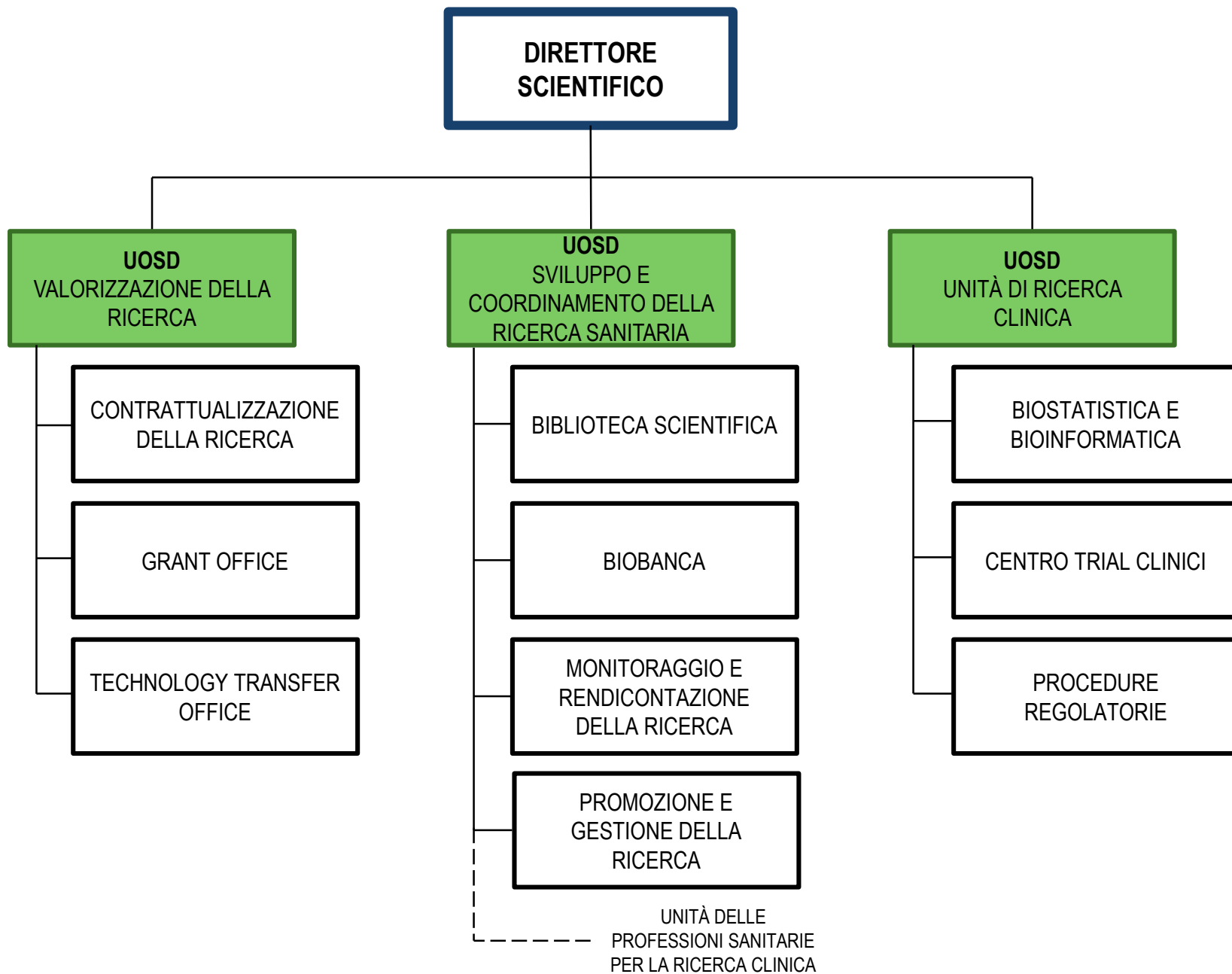




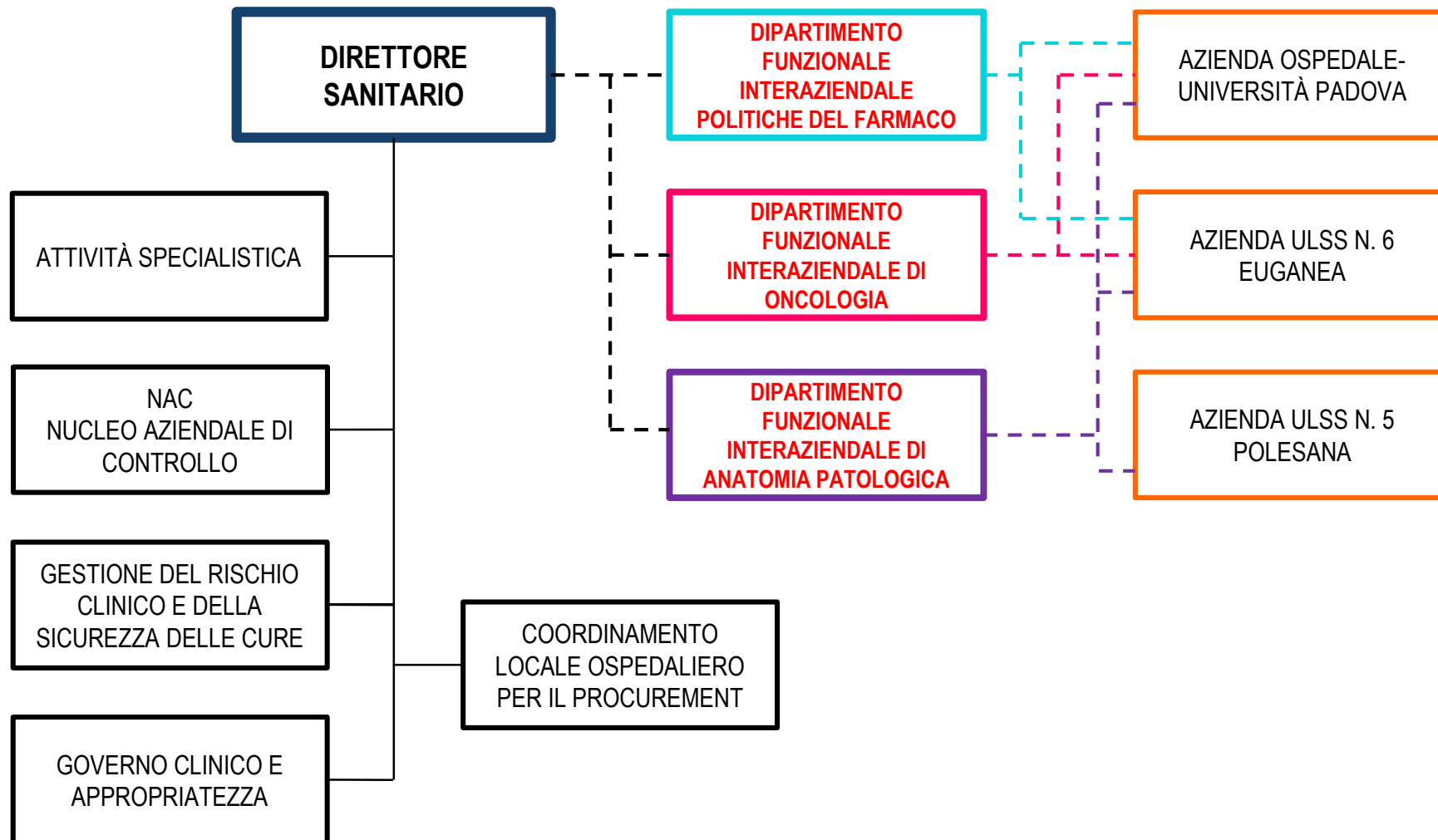
Unità di staff alla Direzione Generale



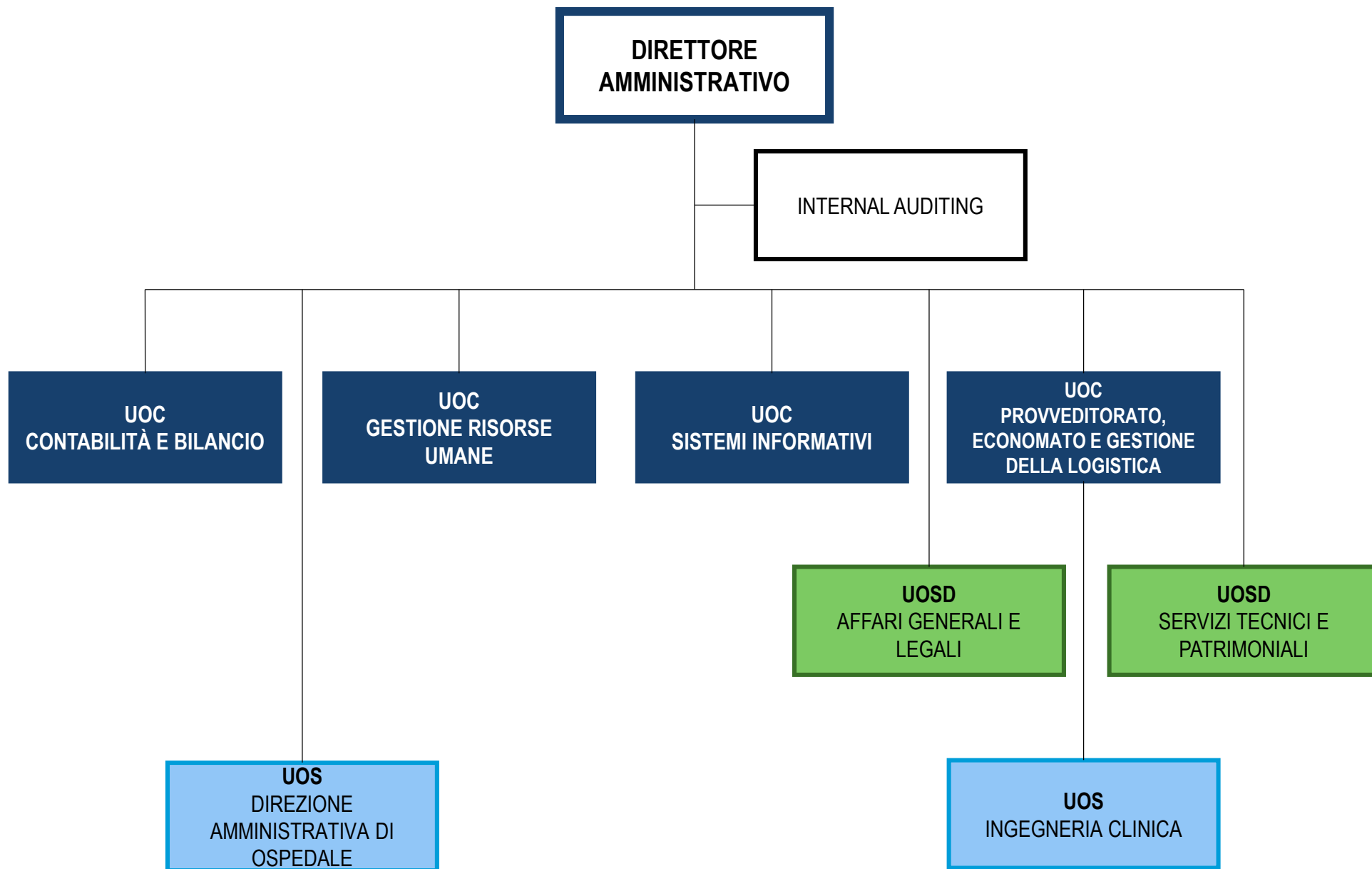
Unità di staff alla Direzione Scientifica

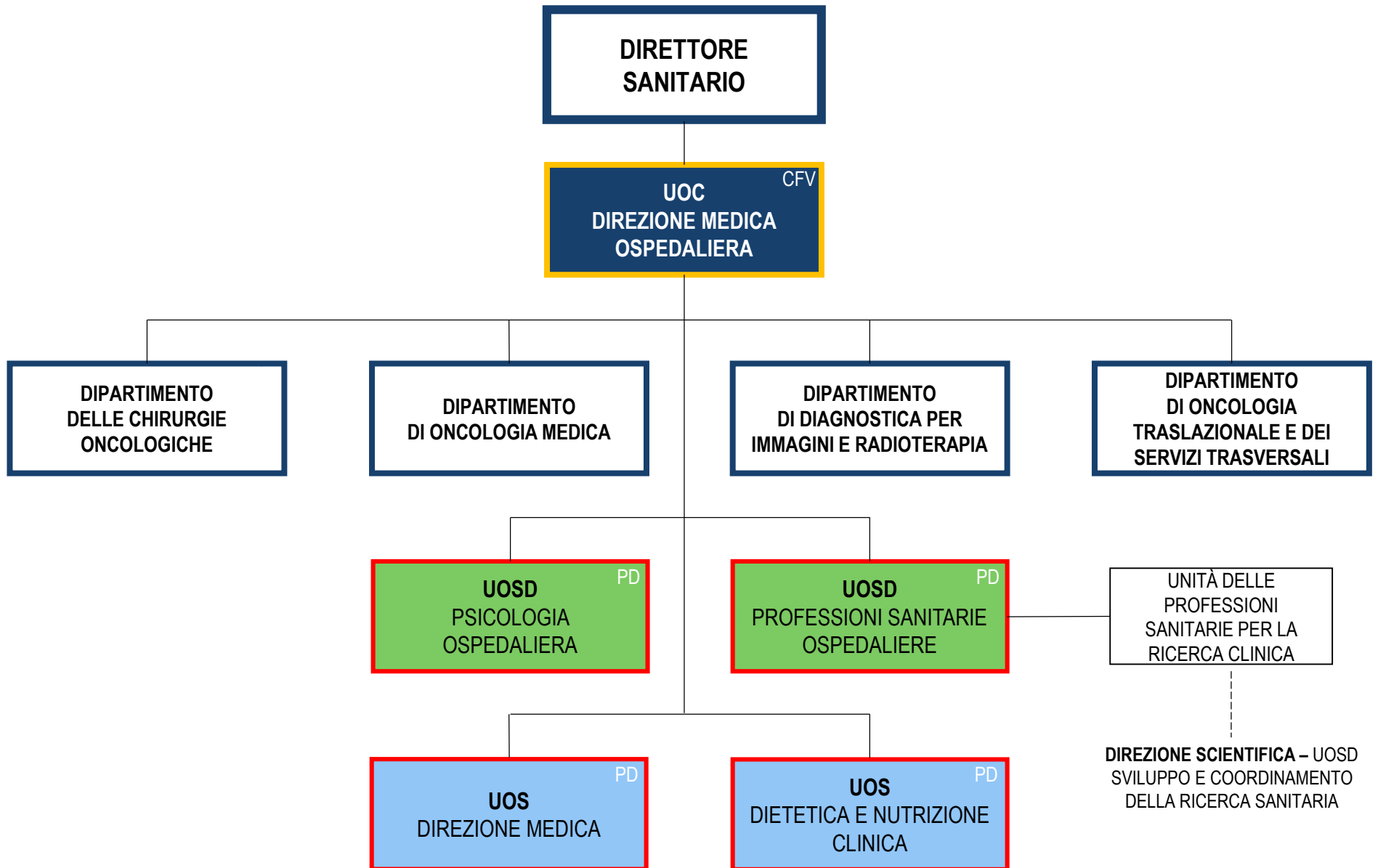


Unità di staff alla Direzione Sanitaria



Area della Direzione Amministrativa





**DIPARTIMENTO
DI ONCOLOGIA
MEDICA**

UOC^{CFV}
GASTROEN-
TEROLOGIA

UOC^{CFV}
ONCOEMATO-
LOGIA

UOC^{PD}
ONCOLOGIA 1

UOC^{PD}
ONCOLOGIA 2

UOC^{CFV}
ONCOLOGIA 3

UOC^{PD}
TERAPIA DEL
DOLORE E CURE
PALLIATIVE

UOSD^{CFV}
TRAPIANTI
CSE

UOSD^{PD}
TUMORI
EREDITARI

UOS^{PD}
NEURO-
ONCOLOGIA

UOS^{PD}
NEOPLASIE
TORACICHE

UOS^{PD}
CARDIOLOGIA

UOS^{PD}
ENDOSCOPIA
DIGESTIVA

UOS^{PD}
PATOLOGIA
ONCOLOGICA
UROLOGICA

UOS^{PD}
SARCOMI E
TUMORI
DELL'OSSO

UOS^{PD}
TUMORI
TESTA-COLLO

UOS^{PD}
ONCOLOGIA
DEL
MELANOMA

UOS^{CFV}
HOSPICE

DIPARTIMENTO DELLE CHIRURGIE ONCOLOGICHE

